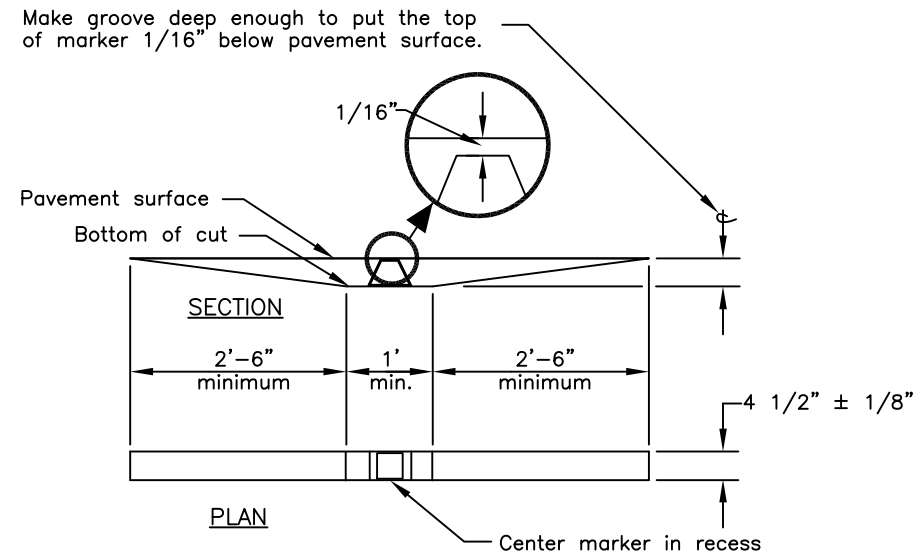
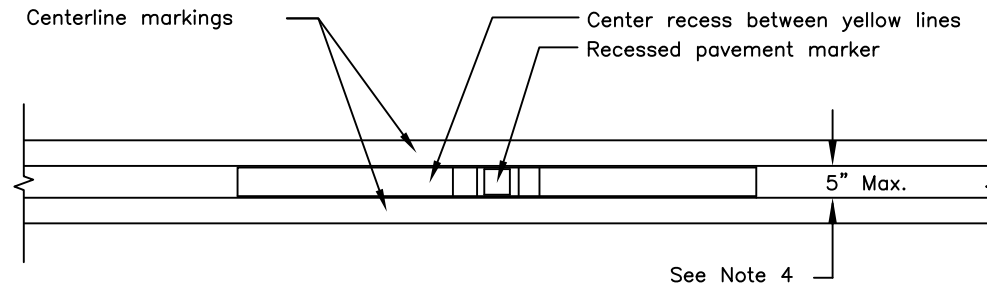


GENERAL NOTES

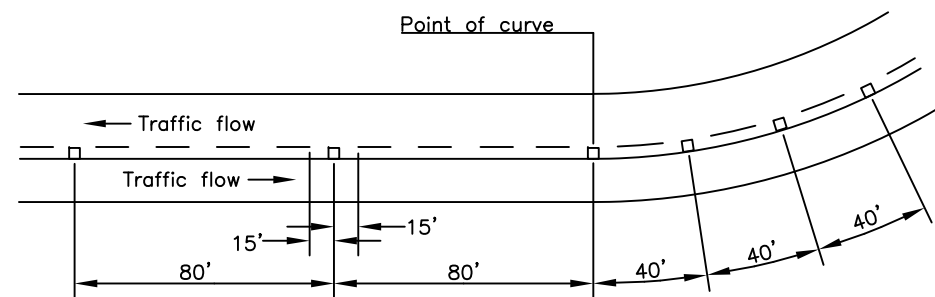
1. Install recessed pavement markers spaced at 80' on tangent sections of roadway and on curves with a radius greater than 1,600'.
2. Install recessed pavement markers spaced at 40' on curves with a radius 1,600' or less.
3. Install recessed pavement markers between the lines on sections with double lines (either broken or solid.)
4. Increase the distance between yellow painted lines from the standard 3" up to a maximum of 5" to minimize paint overspray onto the marker.
5. Install recessed pavement markers on the centerline of the line, midpoint between stripe segments on sections with single broken lines.
6. Install reflectors of the same color as the pavement markings they supplement, except when red reflectors are specified on the departure side of markers on one-way roads to warn motorists they are going the wrong way.
7. Unless otherwise specified on one-way roads, reflectors are required only on the approaching traffic side of markers. In these cases, the 2'-6" taper may be omitted on the departure side.



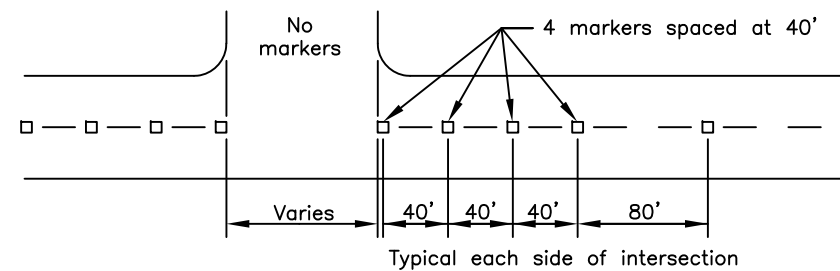
RECESSED PAVEMENT MARKER SLOT



RECESSED PAVEMENT MARKERS WITH DOUBLE CENTERLINE INSTALLATION



RECESSED PAVEMENT MARKERS ON CURVES WITH A RADIUS LESS THAN 1,600'



RECESSED PAVEMENT MARKERS AT INTERSECTION APPROACHES

State of Alaska DOT&PF  
ALASKA STANDARD PLAN  
RECESSED PAVEMENT  
MARKERS

Adopted as an Alaska  
Standard Plan by: *Kenneth J. Fisher*  
Kenneth J. Fisher, P.E.  
Chief Engineer

Adoption Date: 02/08/2019

Last Code and Stds. Review  
By: Date:

Next Code and Standards Review date: 02/08/2029