

VICINITY MAP

Boat Grid
(removed)

Cold Storage

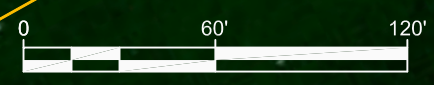
Rip-Rap

Transfer Bridge

City Dock

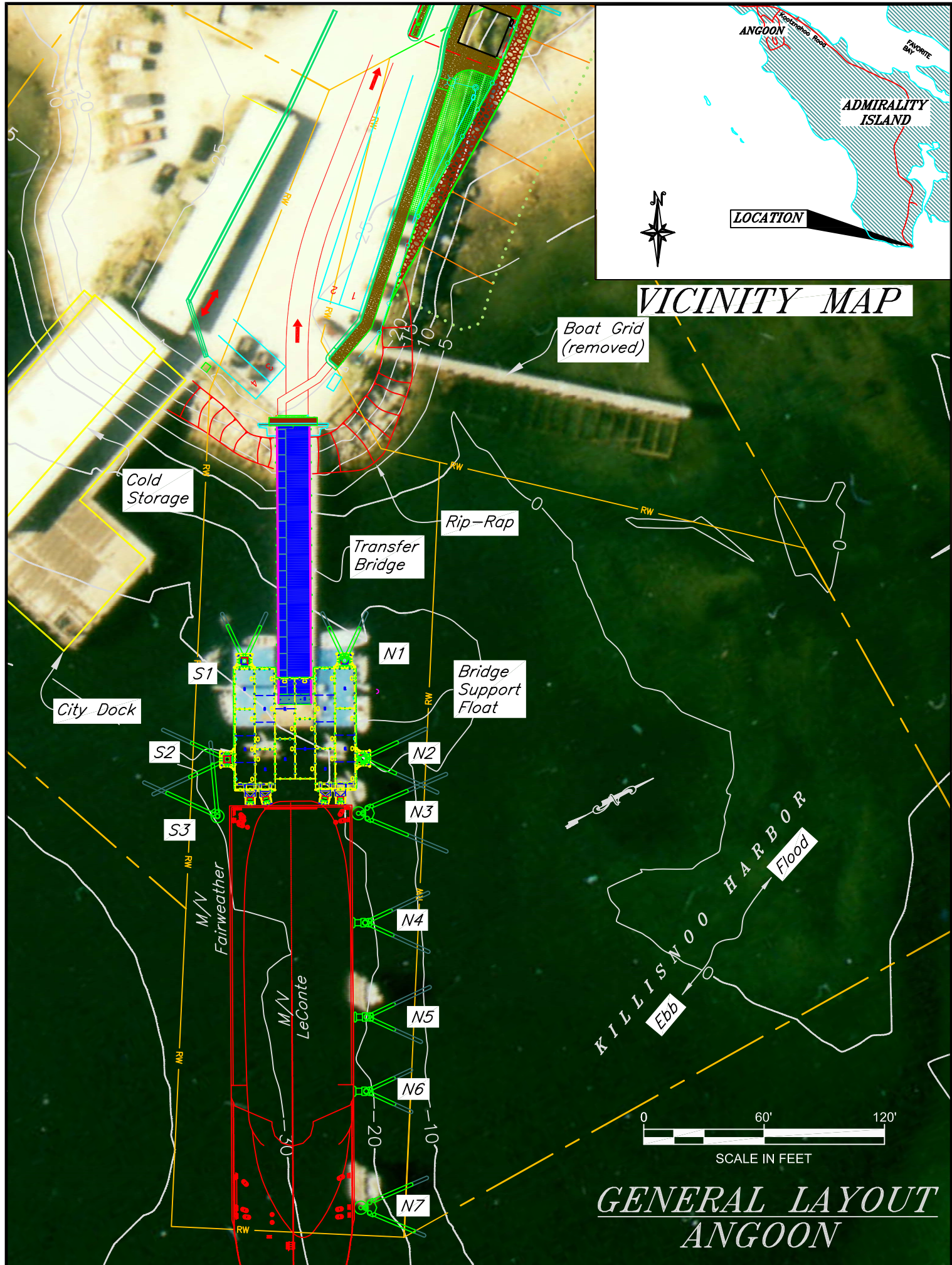
Bridge Support Float

KILLISNOO HARBOR
Flood
Ebb



SCALE IN FEET

GENERAL LAYOUT ANGOON



Angoon Ferry Terminal

2.5 Mile Killisnoo Road

Owner: State of Alaska

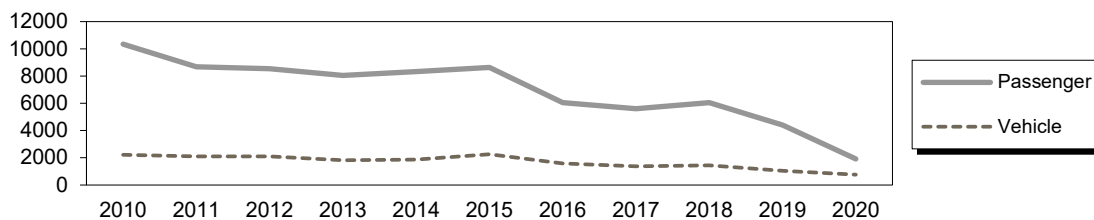
Contact: Simon Bradley, AMHS Terminal Ops Manager (Ketchikan) – 907-228-7290

Terminal Description: Angoon Ferry Terminal is a stern-loading facility consisting of a transfer bridge, steel pontoon, intermediate ramp with apron and (6) mooring structures. There is a passenger waiting building, staging area, purser’s shelter and pit toilets located in the uplands.

The marine terminal serves the 235 Class Ferries with integral stern door/ramp and the Alaska Class Ferries that require a shore-side apron. There is no terminal manager at this facility; therefore, the terminal is configured remotely from the ferry to accommodate the two vessel configurations.

Transient, small craft are permitted to moor at the steel pontoon. Stairs and a cross-over pedestrian walkway provide access between the bridge and the pontoon deck.

Summary of passenger and vehicle traffic volumes (source: <https://dot.alaska.gov/amhs/reports.shtml>):



The most recent above water and underwater surveys were conducted on July 28, 2021 and August 14, 2021, respectively. Copies are available upon request from the ADOT&PF – Marine Design Department.

Vessels	
Name	Berthing Alignment
235 CLASS/ACF	Stern
N/A	Port
N/A	Stbd

Tidal Data (MLLW 0.0 feet)	
EHW	19.0
MHHW	14.1
MHW	13.2
ELW	-5.5

Terminal Building	
Year Built:	2016
Square Footage:	342 s.f.
Heating System:	Heat Pump & Baseboard
Fuel Storage:	N/A; Electric
Fire Protection:	N/A
Condition:	Good

Generator & Building	
	N/A

Utilities	
Telephone:	No
Electrical:	Yes

Uplands	
Short-Term Parking:	10 cars
Long-Term Parking:	10 cars
Staging Area	65 lineal feet
Driving Surface:	Asphalt

Vehicle Transfer Bridge - #0181	
Type:	16' x 132'; 4 Girders
Year Built:	2011
Shoreward support:	Concrete Abutment ('77)
Seaward support:	Steel Support Float
Coating:	Spray Metalizing
Pedestrian Access:	On Bridge
Lighting:	3 overhead light posts
Condition:	New
Load Posting Sign:	N/A
Original Design Load:	HL93

Bridge Support Float	
Type:	60x60x5' Flexifloat
Year Built:	2011
Ballasted:	Yes
Ramp & Apron:	Electro-mechanical actuators
Anodes:	Yes
Condition:	Good

Dolphins							
Dolphins	Dolphin Piles	Fender Support	Fender Face	Anodes	Built	Cond.	Notes
S3	2B, 1V	Floating		Yes	2011	New	
S2	2B, 1V	-	-	Yes	2011	New	Ladder ring
S1	2B, 1V	-	-	Yes	2011	New	
N1	2B, 1V	-	-	Yes	2011	New	
N2	2B, 1V	-	-	Yes	2011	New	Ladder ring
N3	2B, 3V	Floating		Yes	2011	New	
N4	2B, 1V	Hanging	UHMW	Yes	2011	New	
N5	2B, 1V	Hanging	UHMW	Yes	2011	New	
N6	2B, 1V	Hanging	UHMW	Yes	2011	New	
N7	2B, 3V	Floating		Yes	2011	New	Nav Light, Windsock

Terminal Projects			
Year	Project #	Project Name	Description
1977	RS-0998(1)	Ferry Terminal Facilities at Angoon	Construction of new terminal structures. Uplands fill from end of the road to the abutment.
1984	X30006	Angoon FT Basin Dredge	The floor of the basin was excavated beneath the float and beneath the docking footprint.
1988	RS-005(78) 74665	Southeast Secondary Upgrade	The bridge was over-coated with spray metallizing and the bridge support float was replaced with the existing barge from Clark Bay.
1990	75122	Angoon Ferry Terminal Basin Dredge	The floor of the basin was excavated beneath the north corner of the float.
2011	68502	Angoon Ferry Terminal Improvements	This project replaced the marine berthing and transfer structures with new all-tide mooring dolphins and transfer bridge. The new design accommodates the Fast-Vehicle Ferries (FVF) M/V Fairweather & M/V Chenega, as well as LeConte class vessels.

Year	Project #	Project Name	Description
2016	69440	Angoon Ferry Terminal Passenger Facility	This project expanded the uplands approximately 40' seaward along the northeast edge of the embankment, adding 16 parking spaces, staging lanes for 15 vehicles, curb and sidewalk, and area lighting. Also constructed was a new 21' x 21' Waiting Building, Pursers Shelter and Pit Toilet. The bridge abutment backwall, apron and transition plate were replaced with new structures that provide better clearance to vehicles at low tide. A platform and ladder were built on dolphin S1 to provide access to the bridge pontoon.

General Facility Evaluation

Facility Component	Rating
Bridge	8
Float & abutment	6
Apron	5
Mooring Structures	7
Uplands Staging area	5
Uplands Waiting Building	7
Utilities	-

9	EXCELLENT CONDITION
8	VERY GOOD CONDITION - no problems noted
7	GOOD CONDITION - some minor problems.
6	SATISFACTORY CONDITION - structural elements show minor deterioration
5	FAIR CONDITION - all primary structural elements are sound but may have minor corrosion, cracking or chipping. May include minor erosion on bridge piers.
4	POOR CONDITION - advanced corrosion, deterioration, cracking or chipping. Also significant erosion of concrete bridge piers.
3	SERIOUS CONDITION - corrosion, deterioration, cracking and chipping, or erosion of concrete bridge piers have seriously affected deck, superstructure, or substructure. Local failures are possible.
2	CRITICAL CONDITION - advanced deterioration of deck, superstructure, or substructure. May have cracks in steel or concrete, or erosion may have removed substructure support. It may be necessary to close the bridge until corrective action is taken.
1	"IMMINENT" FAILURE CONDITION - major deterioration or corrosion in deck, superstructure, or substructure, or obvious vertical or horizontal movement affecting structure stability. Bridge is closed to traffic but corrective action may put back in light service.
0	FAILED CONDITION - out of service - beyond corrective action
N	Not applicable